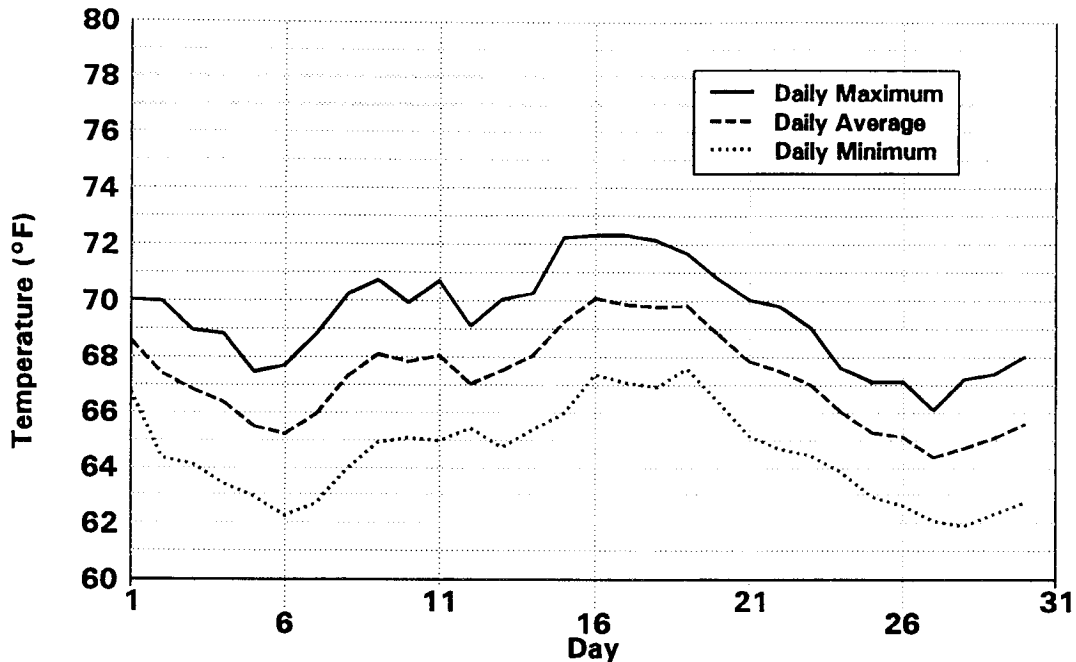
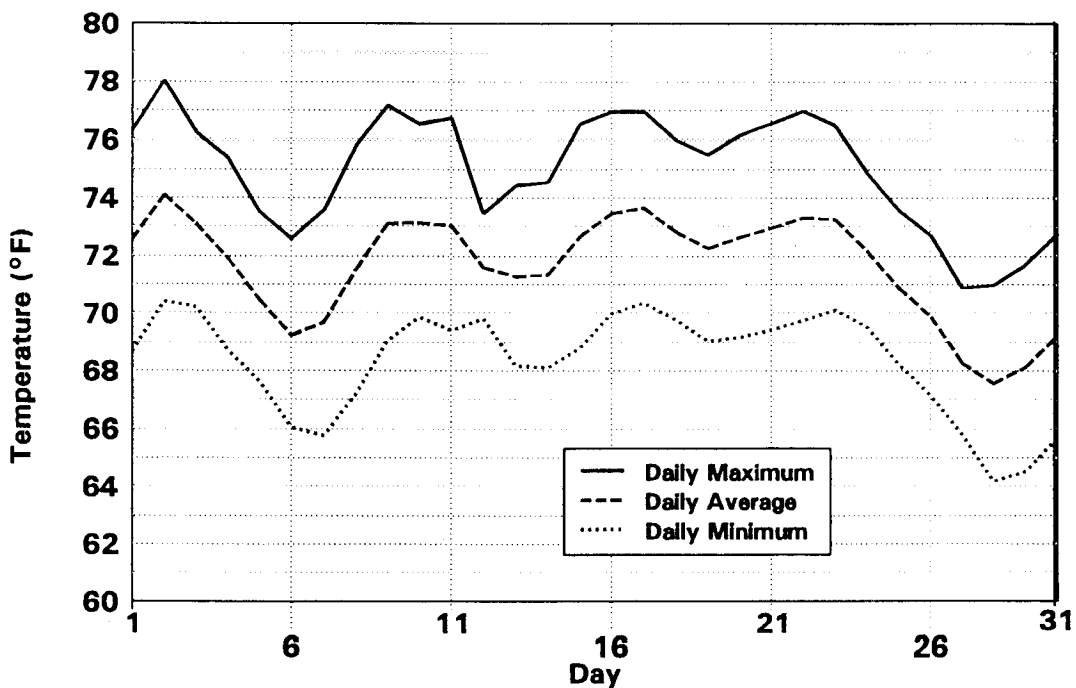


Figure 3D-22.
 Simulated Daily Water Temperatures in Middle Owens River at Five Bridges Road during August at the Dry-Year Threshold for the No-Diversion Alternative



Note: The simulation is based on the 20% cumulative frequency flow of 153 cfs for Pleasant Valley Reservoir release.

Figure 3D-23.
 Simulated Daily Water Temperatures in the Middle Owens River at River Mile 42 during August at the Dry-Year Threshold for the No-Diversion Alternative



Note: The simulation is based on the 20% cumulative frequency flow of 153 cfs for Pleasant Valley Reservoir release.