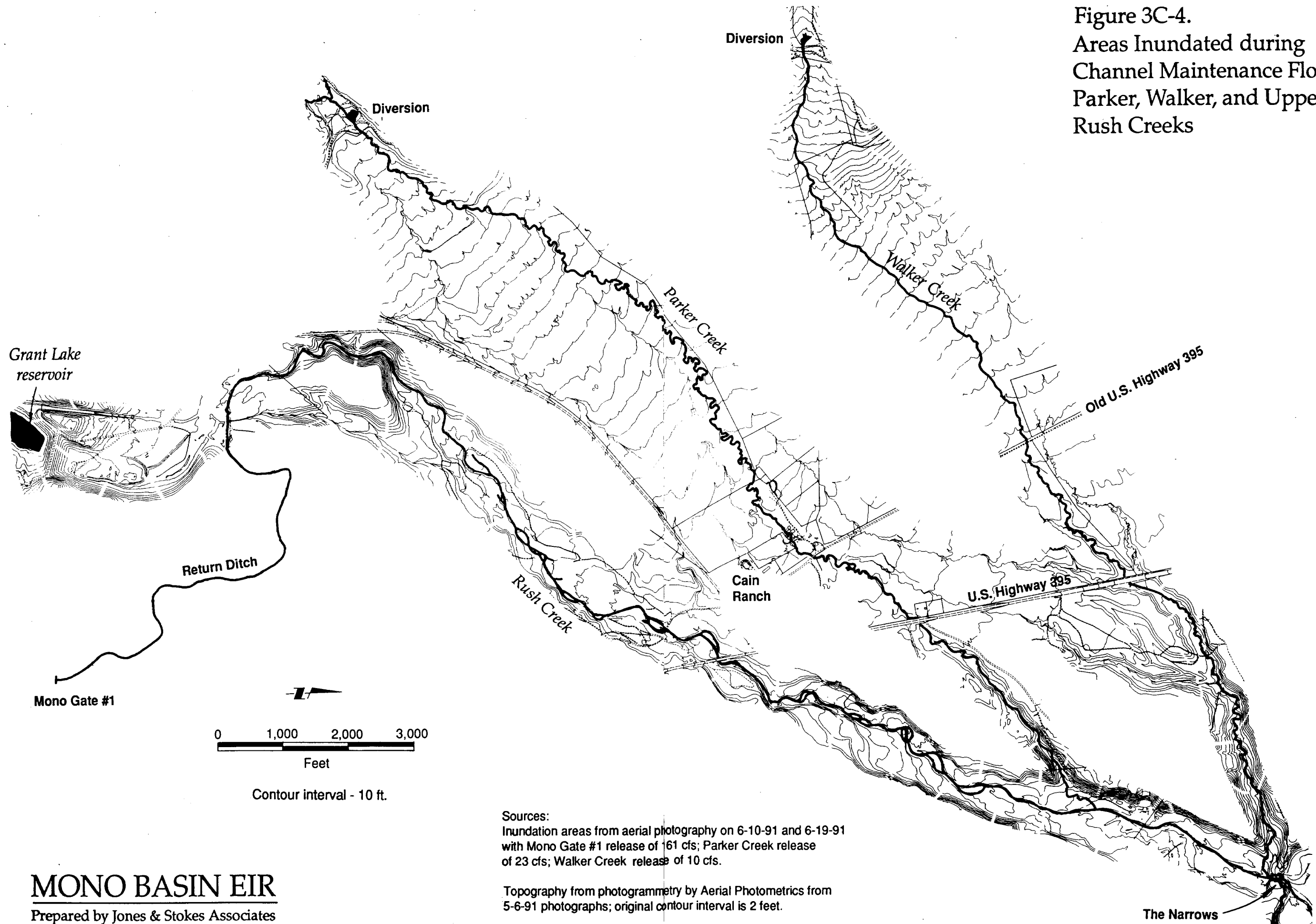


Figure 3C-4.
 Areas Inundated during
 Channel Maintenance Flows -
 Parker, Walker, and Upper
 Rush Creeks



Sources:
 Inundation areas from aerial photography on 6-10-91 and 6-19-91
 with Mono Gate #1 release of 161 cfs; Parker Creek release
 of 23 cfs; Walker Creek release of 10 cfs.

Topography from photogrammetry by Aerial Photometrics from
 5-6-91 photographs; original contour interval is 2 feet.