

C:\Documents and Settings\wesling\My Documents\Projects\2006-06-12_31380_Gazex\Layout_Detail_2006-06-15.dgn

STATE OF CALIFORNIA - DEPARTMENT OF TRANSPORTATION

PROJECT ENGINEER

REVISIONS

NO.	DATE	REVISION

CALCULATED/DESIGNED BY

CHECKED BY

REVISOR

DATE

REVISOR

DATE



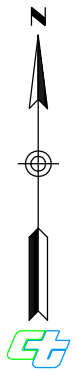
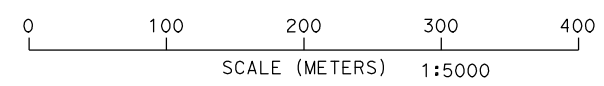
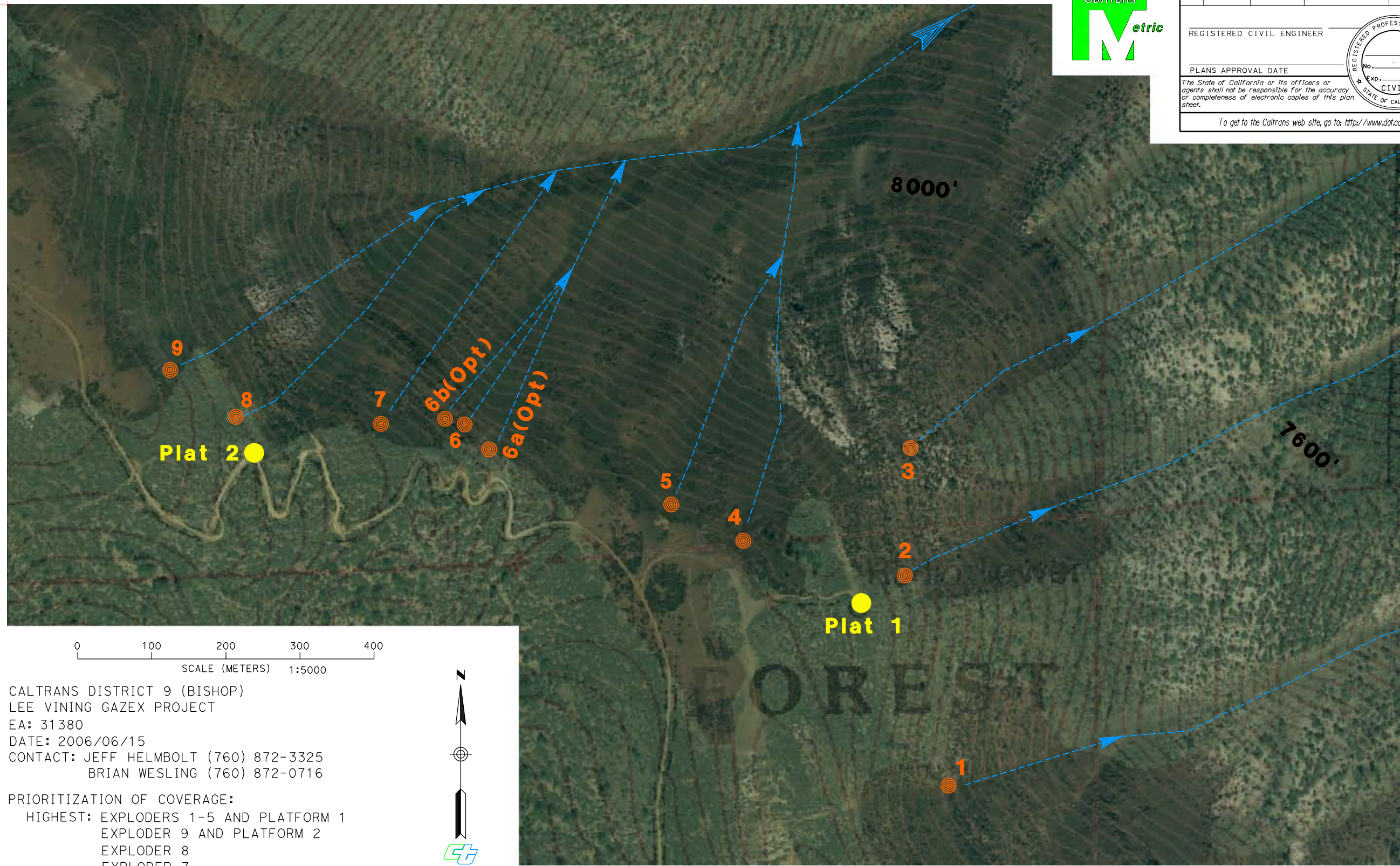
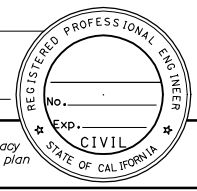
DIST	COUNTY	ROUTE	KILOMETER POST TOTAL PROJECT	SHEET No.	TOTAL SHEETS

REGISTERED CIVIL ENGINEER

PLANS APPROVAL DATE

The State of California or its officers or agents shall not be responsible for the accuracy or completeness of electronic copies of this plan sheet.

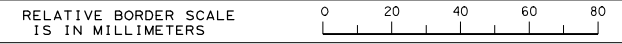
To get to the Caltrans web site, go to: <http://www.dot.ca.gov>



CALTRANS DISTRICT 9 (BISHOP)
 LEE VINING GAZEX PROJECT
 EA: 31380
 DATE: 2006/06/15
 CONTACT: JEFF HELMBOLT (760) 872-3325
 BRIAN WESLING (760) 872-0716

PRIORITIZATION OF COVERAGE:
 HIGHEST: EXPLODERS 1-5 AND PLATFORM 1
 EXPLODER 9 AND PLATFORM 2
 EXPLODER 8
 EXPLODER 7
 EXPLODER 6
 LEAST: EXPLODERS 6b(Opt) AND 6a(Opt)

NOTES: 1) PLATFORM 1 SUPPLIES EXPLODERS 1-5
 2) PLATFORM 2 SUPPLIES EXPLODERS 5-9
 3) HORIZONTAL SCALE IS METRIC BUT CONTOURS INTERVAL IS 40 FEET



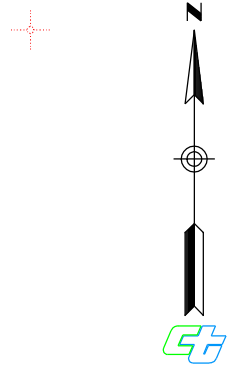
USERNAME => wesling
 DGN FILE => Layout_Detail_2006-06-15.dgn

CU 00000

EA 000000

LAST REVISION
 00-00-00 DATE PLOTTED => 15-JUN-2006
 TIME PLOTTED => 11:34

C:\Documents and Settings\wesling\My Documents\Projects\2006-06-12_31380_Gazex\Layout_Far_2006-06-15.dgn
 STATE OF CALIFORNIA - DEPARTMENT OF TRANSPORTATION
 PROJECT ENGINEER
 CALCULATED/DESIGNED BY
 CHECKED BY
 DATE
 REVISOR
 DATE REVISOR
 DATE REVISOR

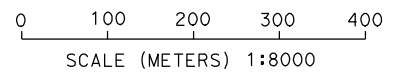
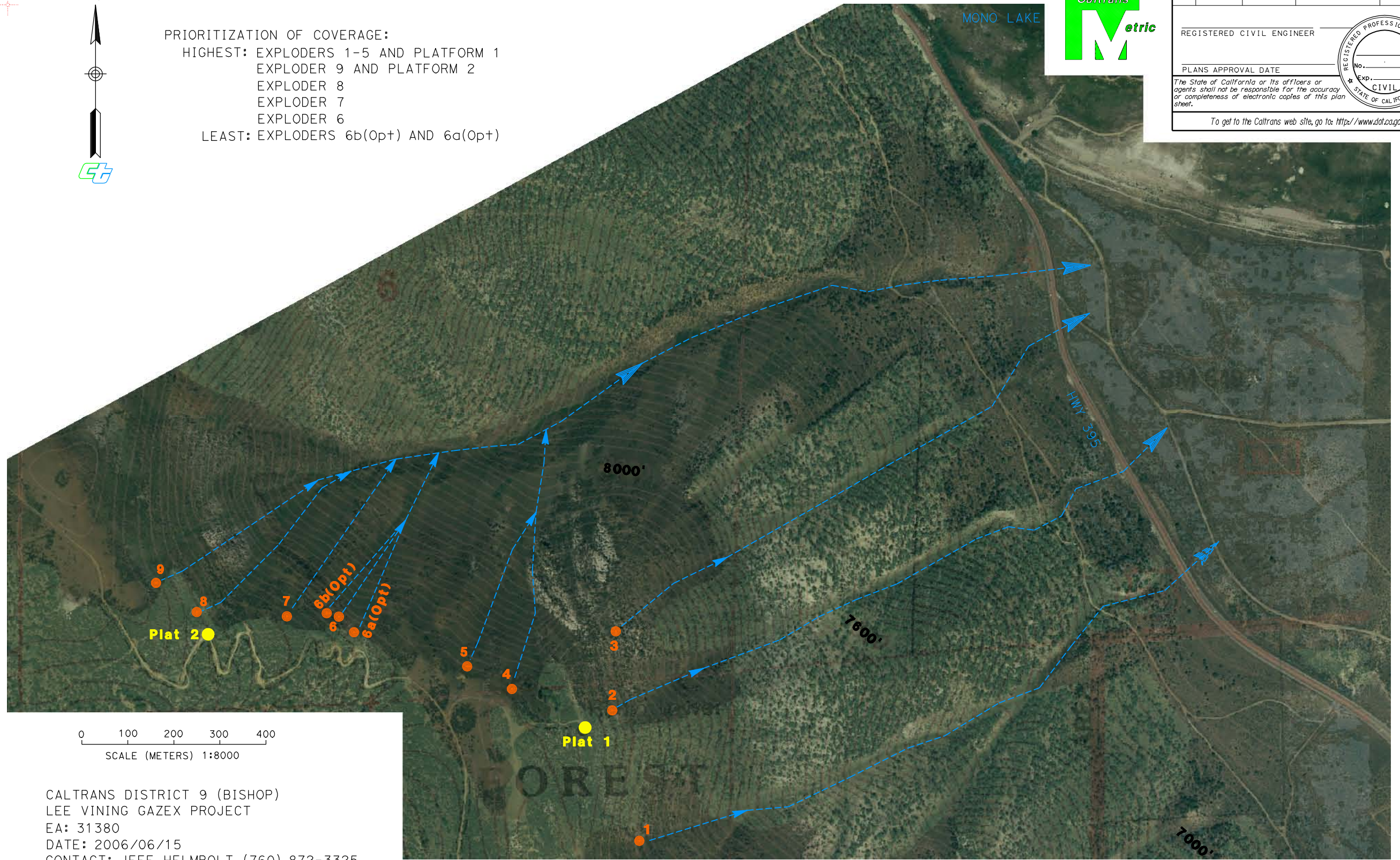


PRIORITIZATION OF COVERAGE:
 HIGHEST: EXPLODERS 1-5 AND PLATFORM 1
 EXPLODER 9 AND PLATFORM 2
 EXPLODER 8
 EXPLODER 7
 EXPLODER 6
 LEAST: EXPLODERS 6b(Opt) AND 6a(Opt)



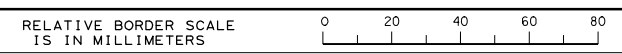
DIST	COUNTY	ROUTE	KILOMETER POST TOTAL PROJECT	SHEET No.	TOTAL SHEETS

REGISTERED CIVIL ENGINEER
 PLANS APPROVAL DATE
 The State of California or its officers or agents shall not be responsible for the accuracy or completeness of electronic copies of this plan sheet.
 To get to the Caltrans web site, go to: <http://www.dot.ca.gov>



CALTRANS DISTRICT 9 (BISHOP)
 LEE VINING GAZEX PROJECT
 EA: 31380
 DATE: 2006/06/15
 CONTACT: JEFF HELMBOLT (760) 872-3325
 BRIAN WESLING (760) 872-0716

NOTES: 1) PLATFORM 1 SUPPLIES EXPLODERS 1-5
 2) PLATFORM 2 SUPPLIES EXPLODERS 5-9
 3) HORIZONTAL SCALE IS METRIC BUT CONTOURS INTERVAL IS 40 FEET



USERNAME => wesling
 DGN FILE => Layout_Far_2006-06-15.dgn

CU 00000

EA 000000

LAST REVISION
 00-00-00
 DATE PLOTTED => 15-JUN-2006
 TIME PLOTTED => 11:34